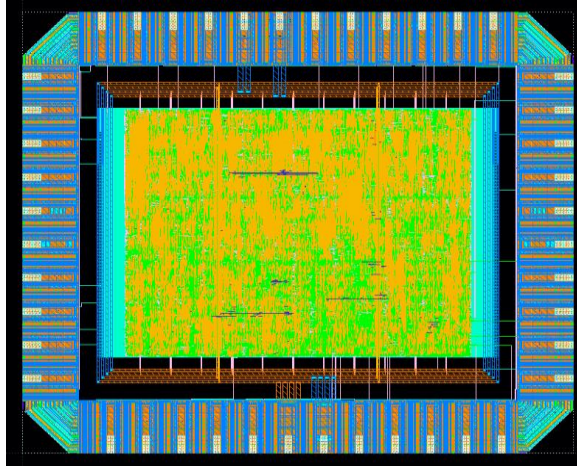


## How to export a GDSII file from Virtuoso, using StreamOut tool

*This CMP tutorial is only accessible through a NDA in place. It is based on  
Cadence IC 6.1.7.*



The purpose of this tutorial is to show how to generate the 3 following files before submitting a design to CMP:

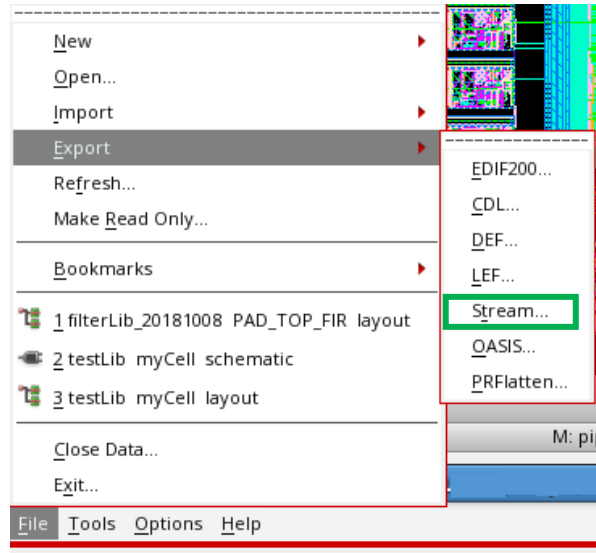
- **topCellName.gds.gz**: design layout at compressed GDSII format.
- **topCellName.log**: stream-out report file generated by Cadence IC during the GDSII export.

The following CAD tool is supported:

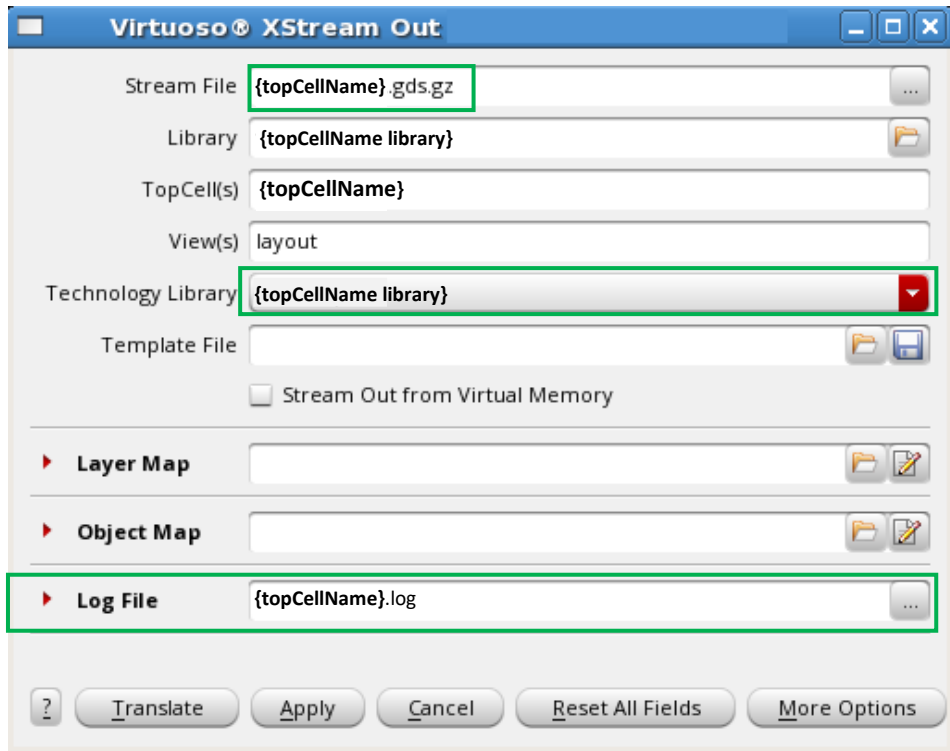
- Cadence / IC version : 06.17.719 (or newer)

The steps are detailed as such:

- 1) On Virtuoso, open the layout view where the top cell of your design is implemented.
- 2) In CIW window, select: File > Export > Stream ... :

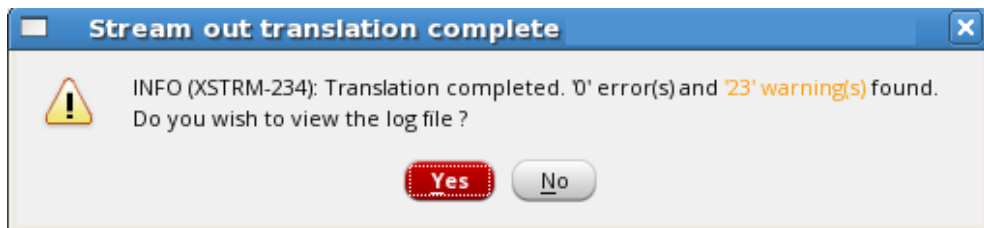


- 3) The StreamOut window opens. Please check and update the fields as follows (some fields are automatically filled, according to your opened layout):
  - Add “.gz” string to the “Stream File” so that the gds file can be automatically compressed,
    - ⇒ [This is not mandatory](#)
  - Chose the “Technology Library” corresponding to the design-kit used,
  - Change the “Log File” name so that it respects the following form: “topCellName.log”



4) Then, click on “Translate” button.

You should have a popup message telling that the StreamOut translation succeeded:



- 5) After the 3 files were created (`topCellName.gds.gz`, `topCellName.log`), send them to **CMP** (through your [myCMP](#) web account).

You can find a tutorial on the **FAQ** or the **Documentation – Help** allowing to explain to you how to proceed:

